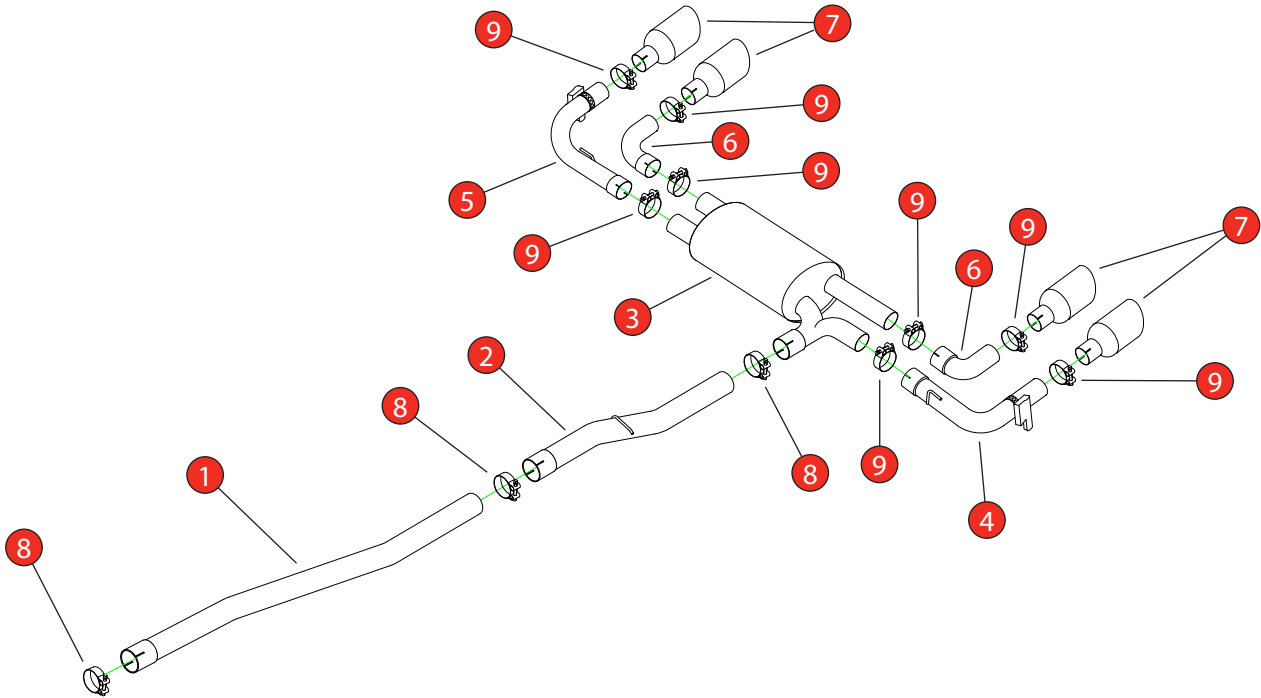


Car	BMW M135i F70	Part No.	SBMS117CF
Year	2024-Current	Fit Kits	536FK
Notes	Where not supplied use original fittings. Valve requires O.E motor, See instructions on following page.	Features	Pipe Diameter:- 70mm

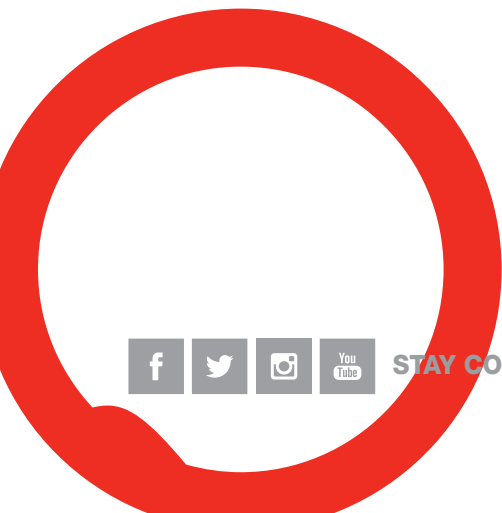
Estimated Fitting Time: 1 Hour



NO.	PART NO.	DESCRIPTION	QTY
1	1028BM	Link Pipe	1
2	1029BM	Link Pipe	1
3	1030BM	Rear Silencer	1
4	1031BM	L/H Valved Trim Bend	1
5	1032BM	R/H Valved Trim Bend	1
6	751BM	Inner Trim Bend	2
7	Z023.10159	Carbon Fibre Ascari Trim	4
Fit Kit			
8	Z016.10055	68 - 73mm Clamp	3
9	Z016.10064	63 - 68mm H/D Clamp	8
10	Z017.12783	Fixing Bow (See Instructions on next page)	2
11	Z024.11284	Actuator (See Instructions on next page)	2

DATE	16/01/2026
ISSUE	00
AUTHORISED	G O'Shea

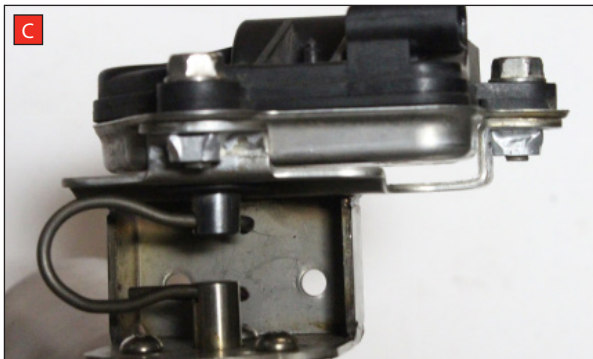
NOTE: ENSURE SCORPION SYSTEM IS CLEAR OF MOVING PARTS AND ALL ORIGINAL FUNCTIONS WORK CORRECTLY.



STAY CONNECTED TO RED POWER.

Car	BMW M135i F70	Part No.	SBMS117CF
Year	2024-Current	Fit Kits	536FK
Notes	Where not supplied use original fittings. Valve requires O.E motor, See instructions.	Features	Pipe Diameter:- 70mm

Estimated Fitting Time: 1 Hour

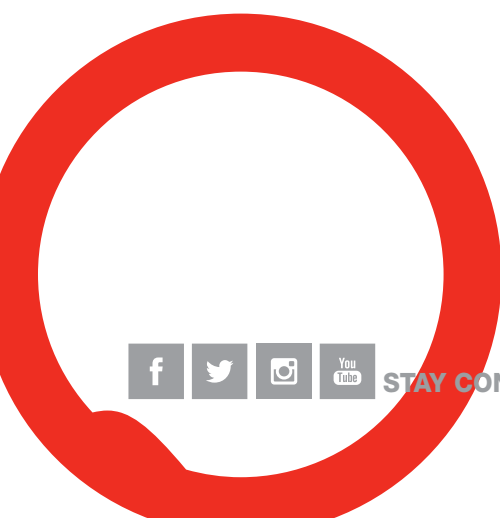


A) Remove the electronic actuator from the original exhaust.

B) On the Scorpion product fit the fixing bow (Part No. 10) into the valve and use the actuator (Part No. 11) to secure the bow in place.

C) Use the M6 bolts and washers to fasten the actuator to the valve ensuring the two straights on the fixing bow fit between the grooves on both of the posts.

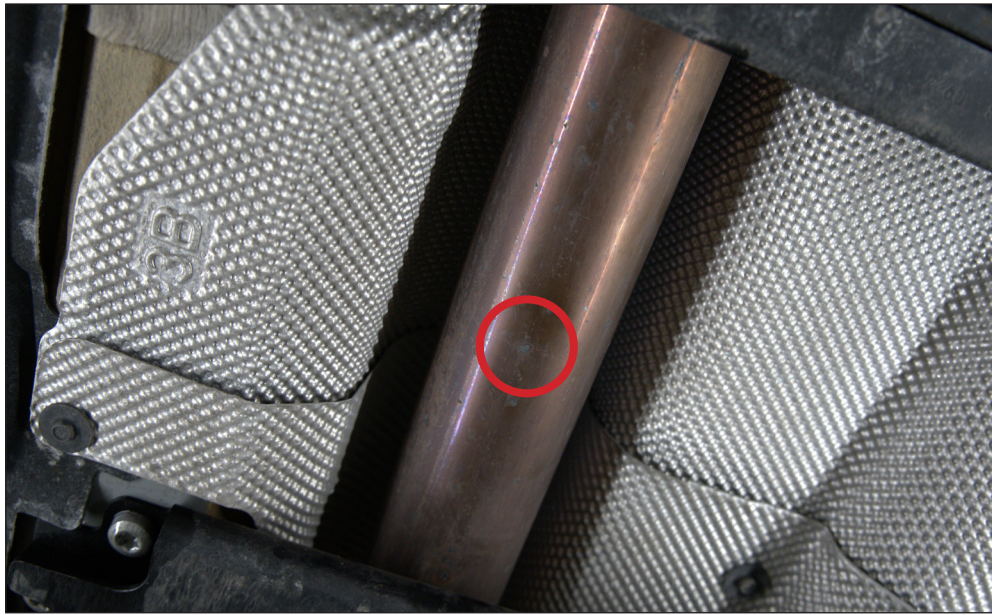
D) Unclip the valve cable from under the car to allow the cable to reach the Scorpion valve.



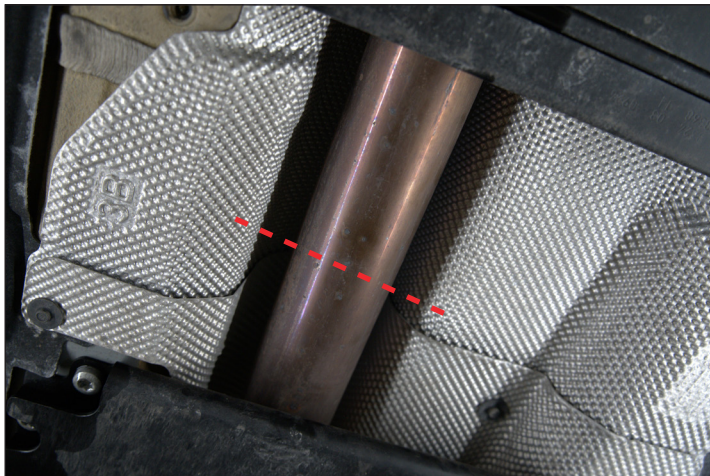
STAY CONNECTED TO RED POWER.

Car	BMW F70 M135i	Part No.	SBMS117CF
Year	2024-Current	Fit Kits	536FK
Notes	Where not supplied use original fittings. Valve requires O.E motor.	Features	Pipe Diameter:- 70mm

Estimated Fitting Time: 1 Hours

**Cutting Instructions:**

The original system requires cutting between the 2 tunnel braces. There are 3 dimples on the pipe, cut at the middle one and clean up the edges.



STAY CONNECTED TO RED POWER.